



HOUSING EAST ST KILDA

OPAT ARCHITECTS

PROJECT: Housing East St Kilda
LOCATION: 21 Lansdowne Road, East St Kilda, Victoria
FUNCTION: Multi-residential
ARCHITECT: Opat Architects
STRUCTURAL ENGINEER: Nestle Engineering
PHOTOGRAPHY: Derek Seabwell

BACKGROUND Opat Architects was commissioned to design a multi-residential complex able to accommodate the maximum number of units on this East St Kilda site. The outcome was eight north-facing, two-bedroom units which succeeded in creating a visual link between two neighbouring buildings, a Federation cottage and a 1960s brick walk up block of flats.

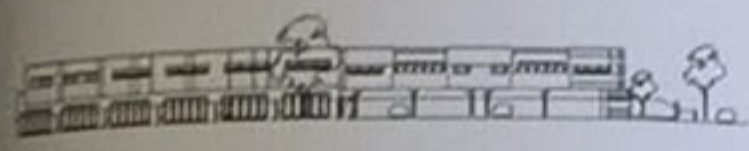
DESIGN The design of the north-facing facade at the rear of the site used vertical lines and warm colours to play on light and shadow in order to create a bush landscape. The layout is such that all units can enjoy direct natural light. At ground floor level six of the apartments have an open plan kitchen and living area with a north-facing interior, which is connected to a secluded timber-lined yard. On the first floor a shared bathroom separates the two bedrooms.

On the building's facade we incorporated windows into the pattern and design, which allowed us to avoid what might have been an unarticulated street frontage, a straight set of walls, no doors and one small window along the east-west axis of the building.

MATERIAL We used brick both for its qualities of function and texture as well as its relationship to the brick apartments next door. In fact, the use of brick allowed us to respond appropriately to context through strong colour choices and a robust material that can stand the test of time.

Working in plan, all set-out was to brick/half brick dimensions. Elevations were considered from a specific viewing point. A pattern was projected over the wall surface and brick pattern was drawn from there.

LEFT: LANSLOWNE ROAD FRONTAGE.



NORTH ELEVATION



WEST ELEVATION

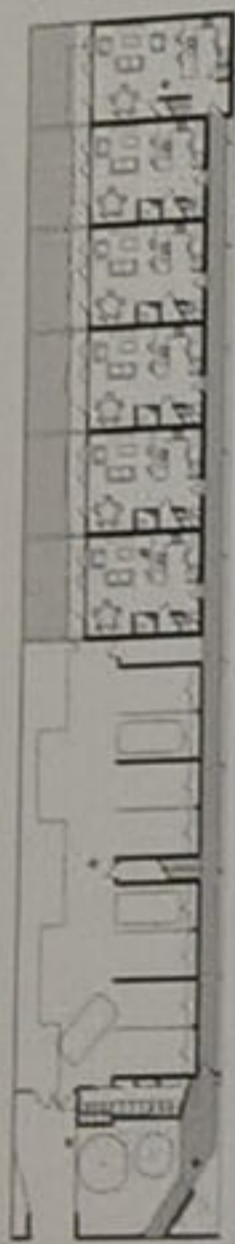
BY USING PATTERN AND THIS COLOUR SET, WE WERE ABLE TO WORK WITHIN THE STREETScape.

Leaving the makers mark, brick provides a solid and sustainable material that allows us to create softness and texture through pattern. By introducing a systematic pattern to the front facade with the one small window, we intended to create a natural landscaped feel rather than one that might have seemed somewhat brutal.

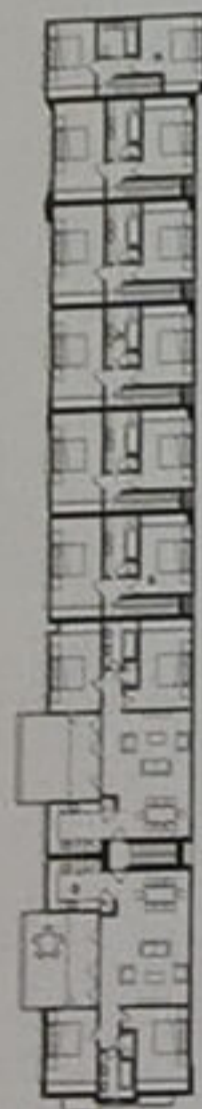
The pattern was generated by considering the decorative cement render lining on the facade of the northern neighbour, a line that negotiates itself around a window. Here, a series of bands of brick colour are applied across the facade and effected by the only window facing the street. Red and cream colour bricks linked the site to its neighbours. We used a third darker brick to tie the pattern together. By using pattern and this colour set, we were able to work within the streetscape.

WPC BRICK WALL, PAVED AND WOODEN PRIVATE SCREEN COMBINE TO CREATE A GALLERY STREET. **RIGHT** NORTH ELEVATION. **OVER PAGE** LANDSCAPE ROAD FRONTAGE.





GROUND FLOOR



FIRST FLOOR

