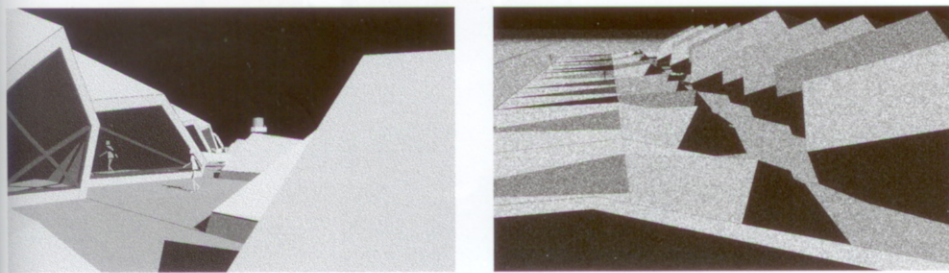


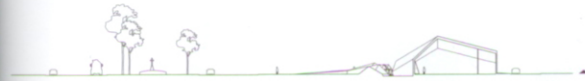
# SPECIAL MENTION

## Mechanics Institute of Mildura

Rowan Opat Architects



Section A 1:2000



Section B 1:2000



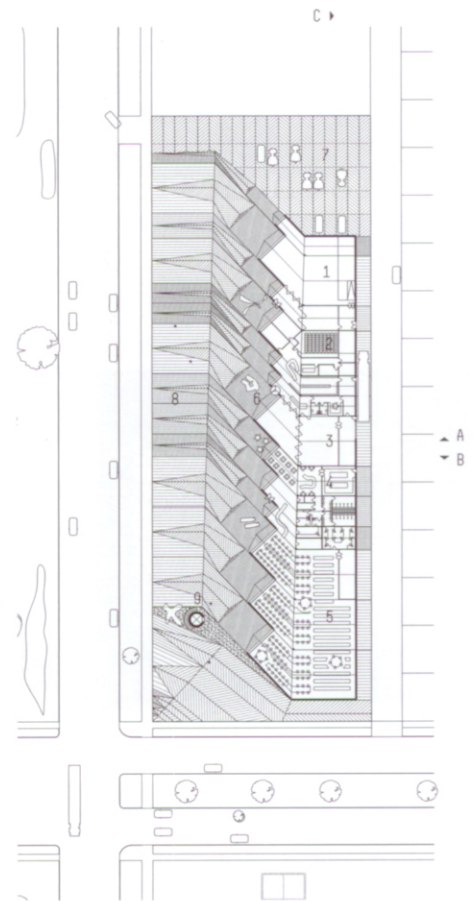
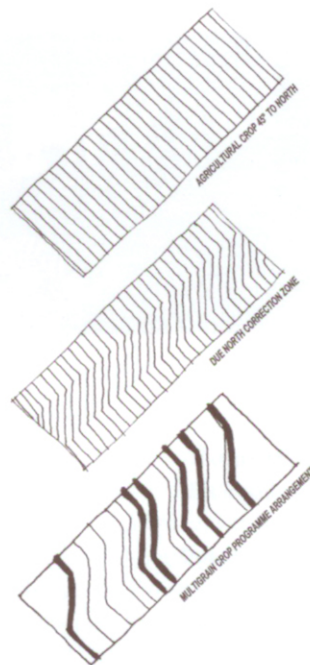
Section C 1:2000

- 1 Multipurpose
- 2 Meeting
- 3 Gallery
- 4 Cafe
- 5 Library
- 6 Forecourt
- 7 Car park
- 8 Landscape baffle
- 9 Tower

### JURY CITATION

This project demonstrates a clarity of idea, which is carefully resolved in an engaging proposal for a work of architecture that could be built. A scheme for a community building in a regional centre, it takes its context seriously as a generator of architectural form while also lifting that context out of the banal.

Three strategies are woven together to generate the dramatic architectural form – civic orientation to the street, orientation to the sun and the formal qualities of the surrounding crop landscape. The result is a furrowed, multigrained civic “crop” – a proposal that brings a sense of *civitas* to the regional community and that demonstrates a clear understanding of landscape as it relates to agriculture.



Plan 1:2000



### Architects' description

This scheme for a Mechanics Institute in Mildura was prepared and submitted for the Haddon scholarship in 2002. The scheme draws on differences between town and country as a means of establishing a sense of the civic for this regional centre. It responds to maturing City Beautiful planning, within which horses and carts have been replaced by motor vehicles.

Program is laid out in rows, like a multigrain civic crop. The lines of program are cranked to mediate between the orientation of the site and sun. The building recalls ancient superstitions and celebrates the Sunraysia region by coveting the sun. The Mechanics Institute is treated as an oasis or refuge – a haven for the community, falling between the public and private realms.

A landscape frontage acts as a visual baffle, facilitating anonymous, discreet inhabitation of the building. The baffle integrates with the building form to simulate the flickering of a crop in the peripheral vision of passing motorists. Folds and ridges are orientated to the street to generate the appearance of a building that rolls away from the main drag.